

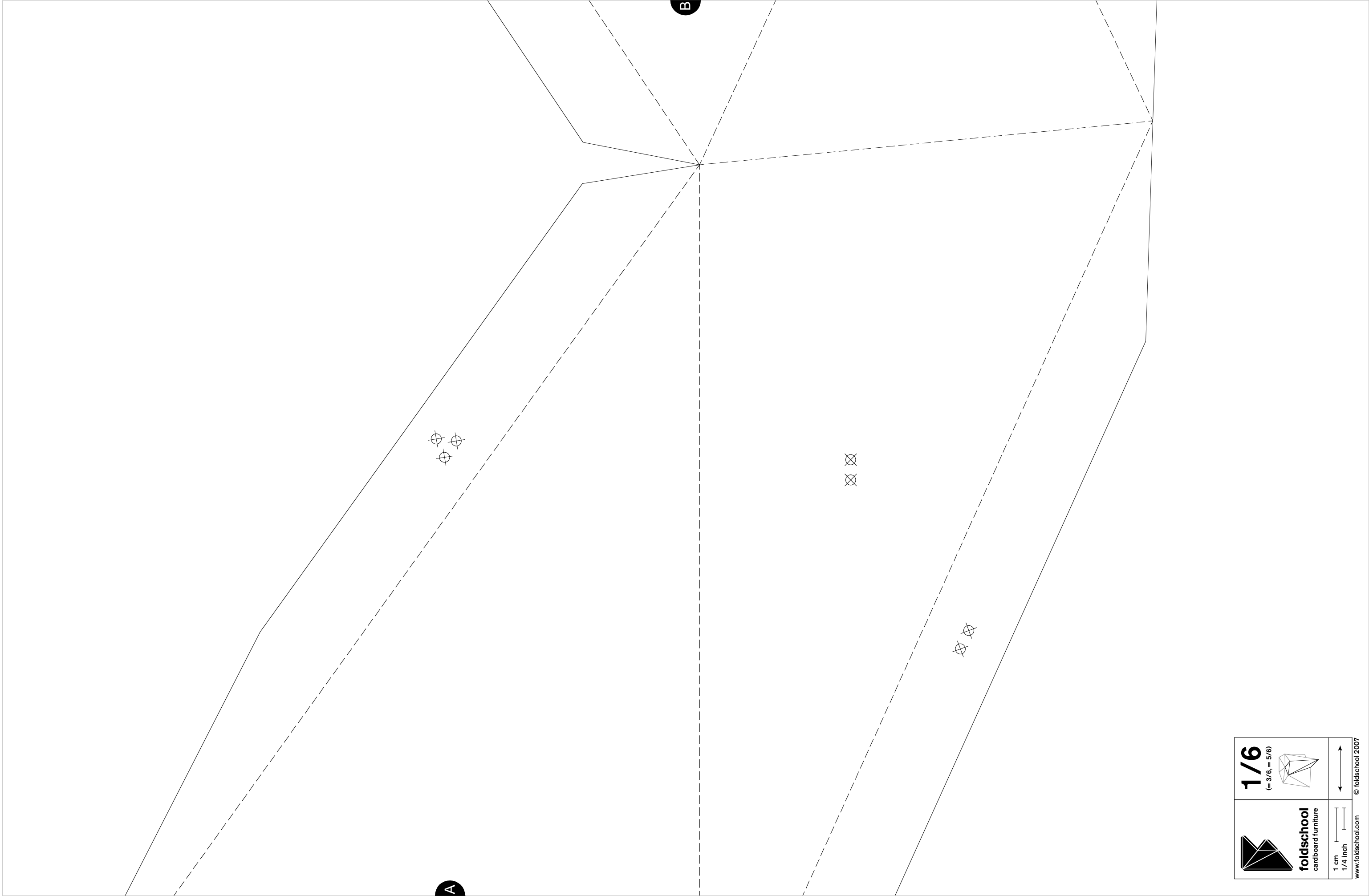




 foldschool cardboard furniture	1/6 (= 3/6, = 5/6) 
1 cm 1/4 inch	
www.foldschool.com	© foldschool 2007

A



 <p>foldschool cardboard furniture</p>	<p>1/6 (= 3/6, = 5/6)</p> 	
<p>1 cm 1/4 inch</p>	<p>www.foldschool.com © foldschool 2007</p>	

1/6
 (= 3/6, = 5/6)

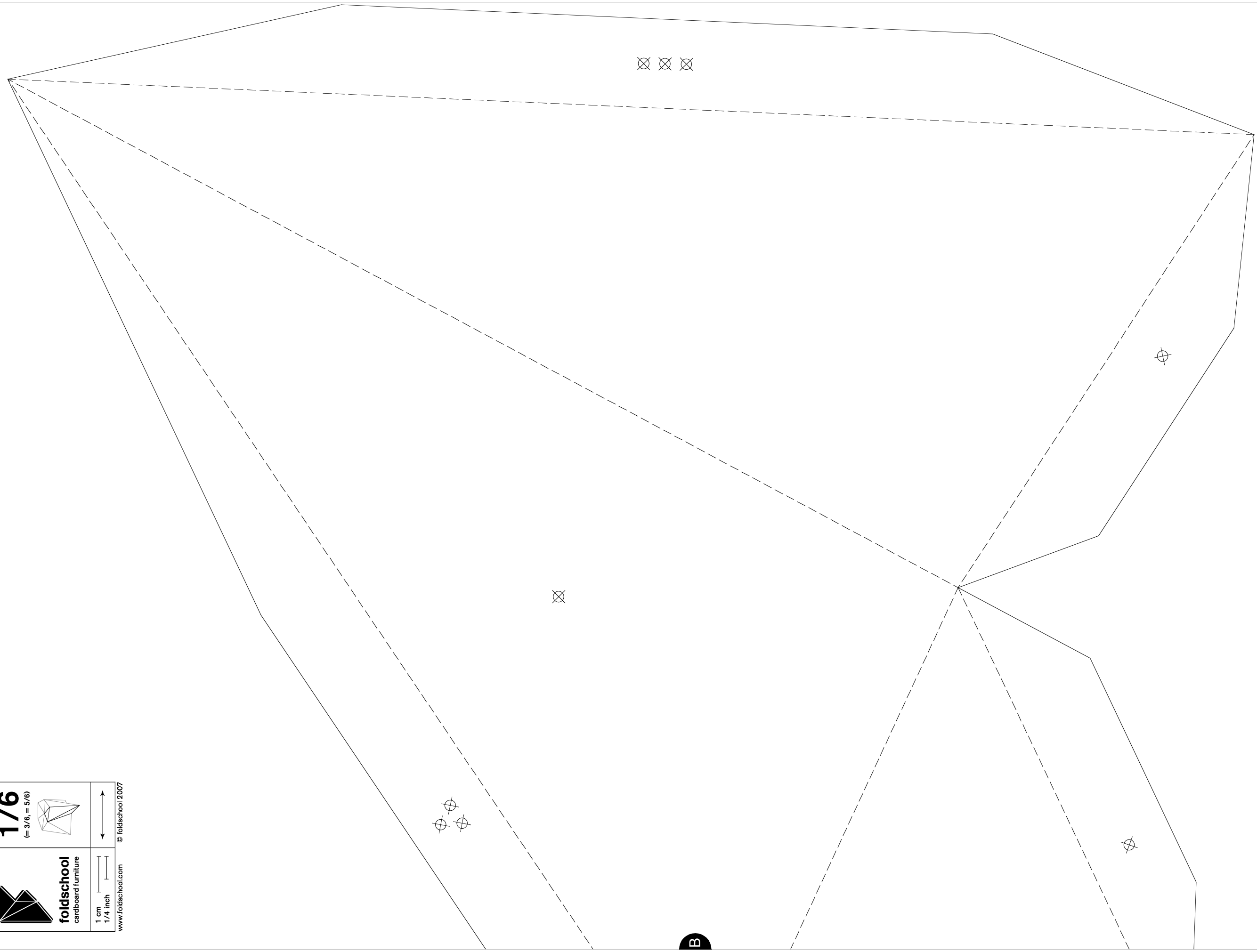


foidschool
 cardboard furniture

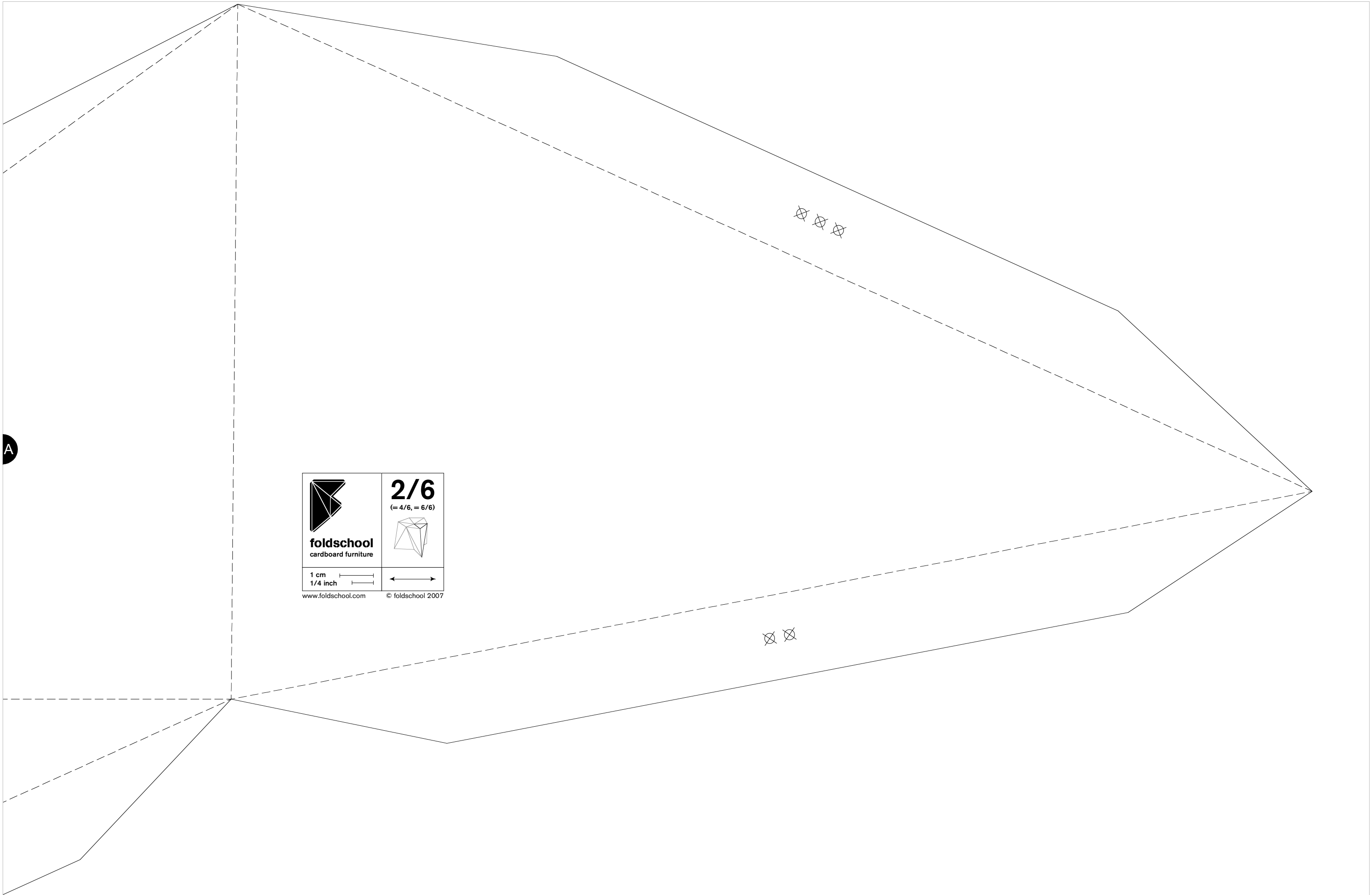
1 cm
 1/4 inch

www.foidschool.com




© foidschool 2007

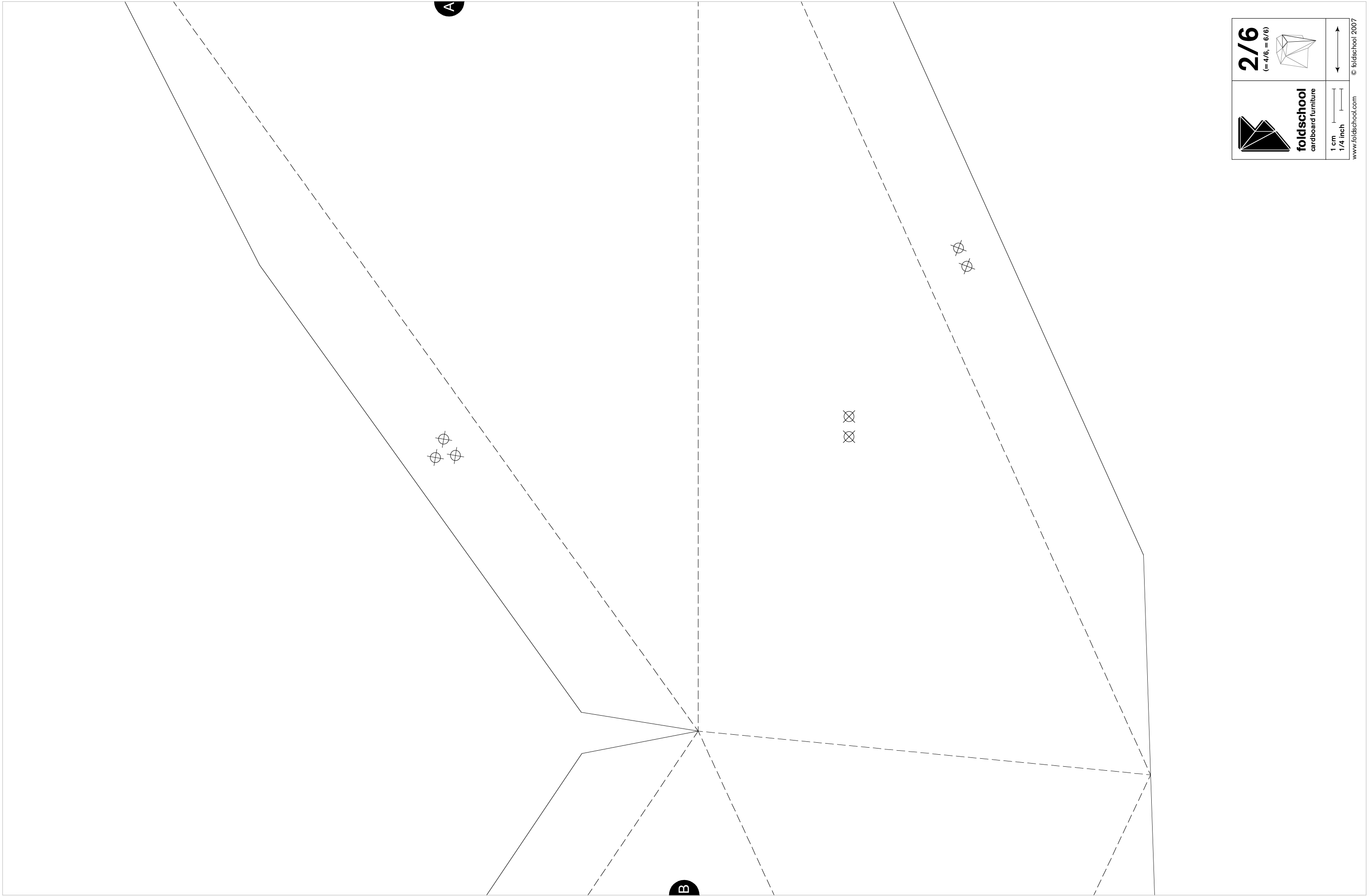


B







A

	2/6 (= 4/6, = 6/6)
foldschool cardboard furniture	
1 cm 1/4 inch	
www.foldschool.com	© foldschool 2007



A

B

2/6 (= 4/6, = 6/6) 	
 foldschool cardboard furniture	 1 cm 1/4 inch www.foldschool.com © foldschool 2007

2/6
(= 4/6, = 6/6)

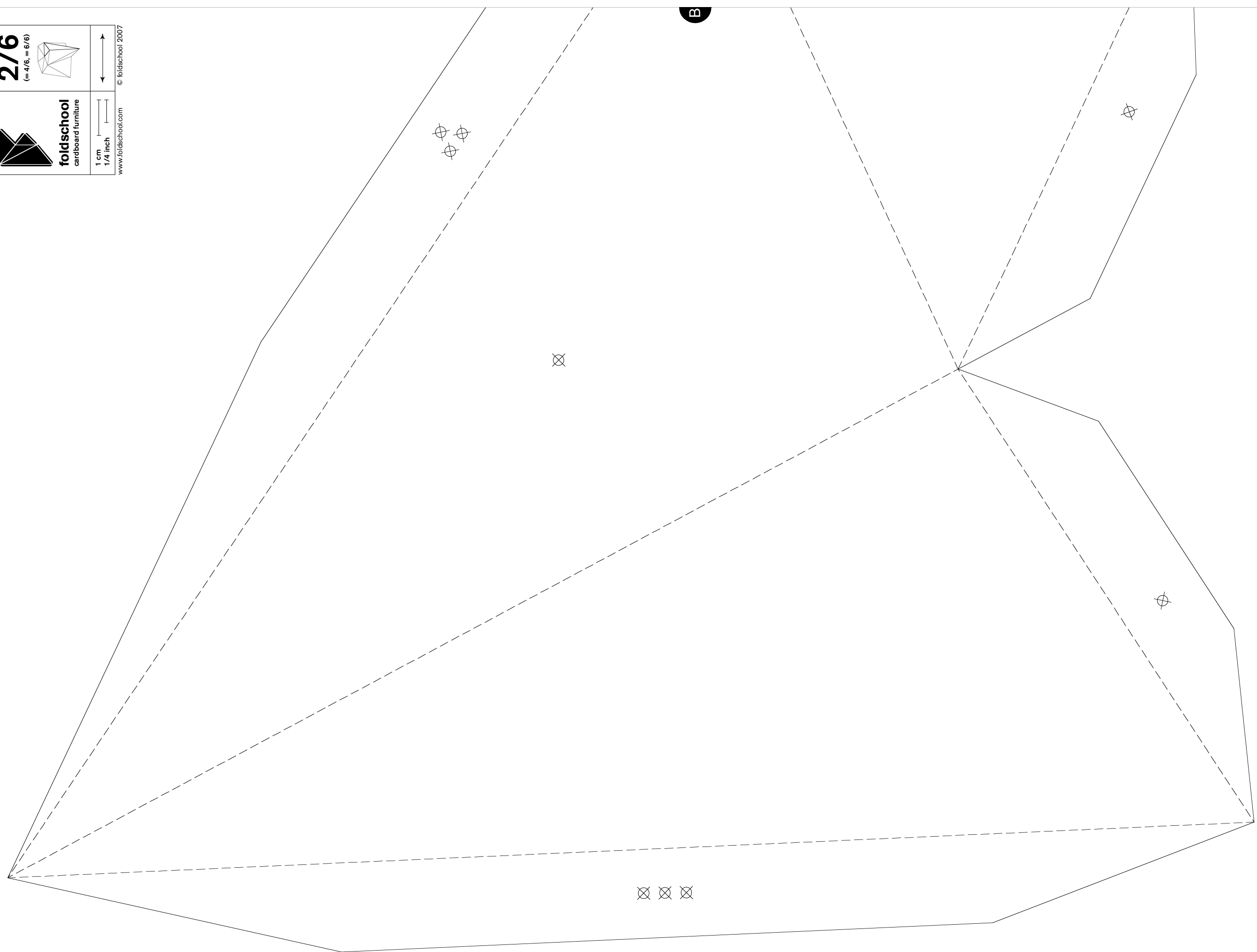


foidschool
cardboard furniture

1 cm
1/4 inch

www.foidschool.com

© foidschool 2007



B

⊗ ⊗ ⊗

⊗ ⊗

⊗

⊗

⊗